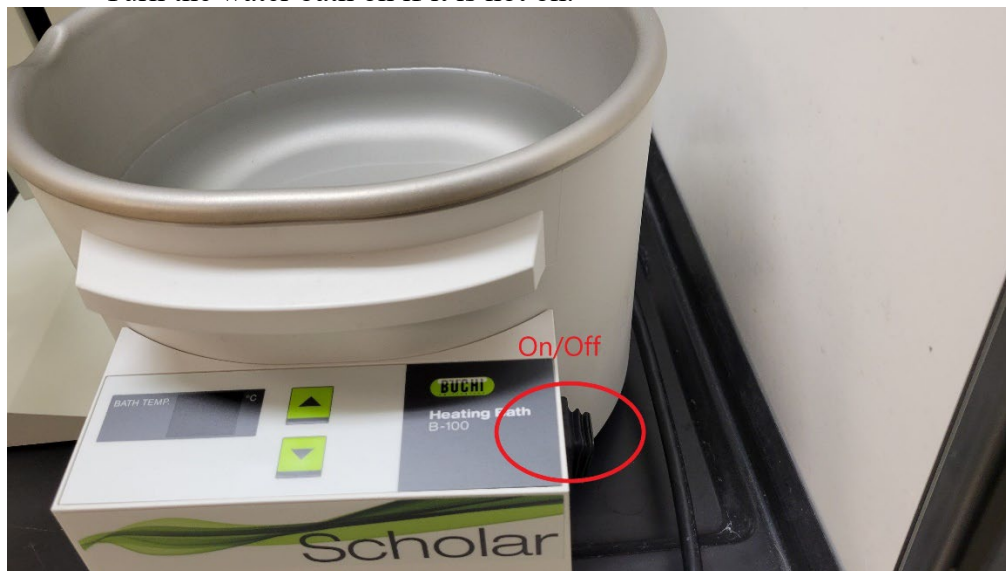
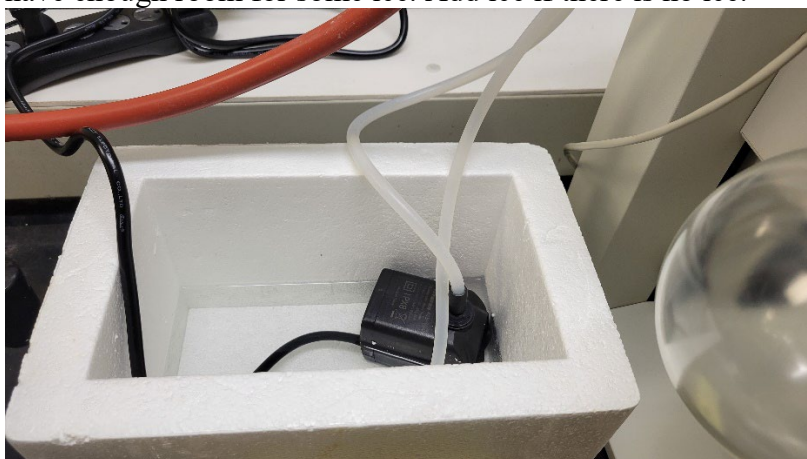


## How to use the rotary evaporator (rotovap)

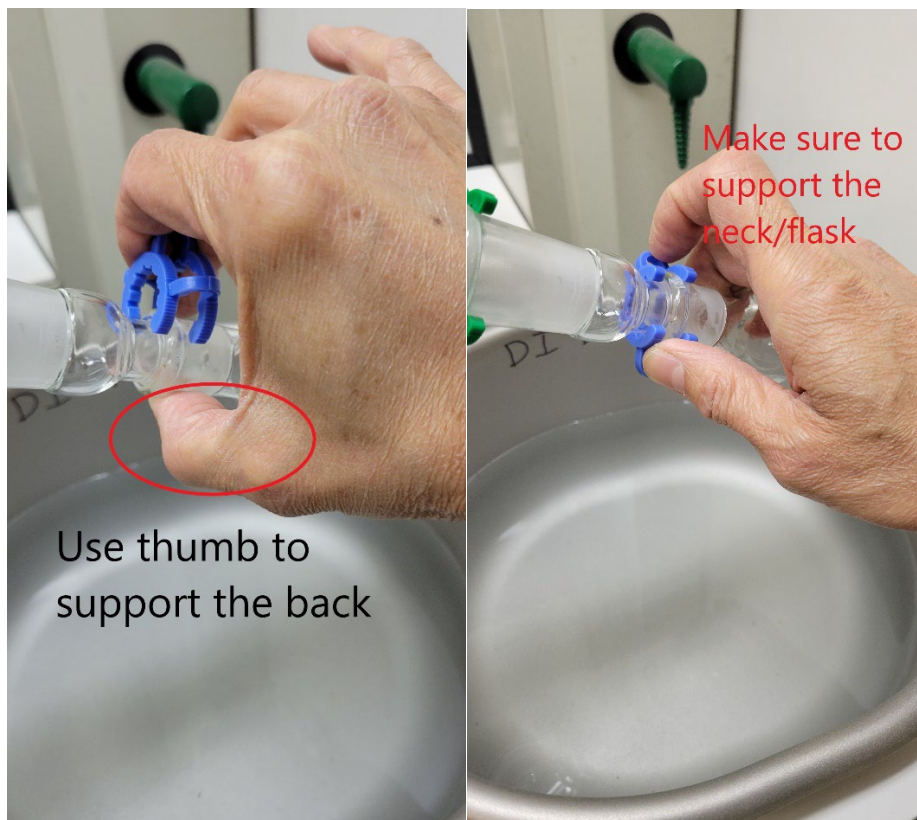
- Turn the water bath on if it is not on.



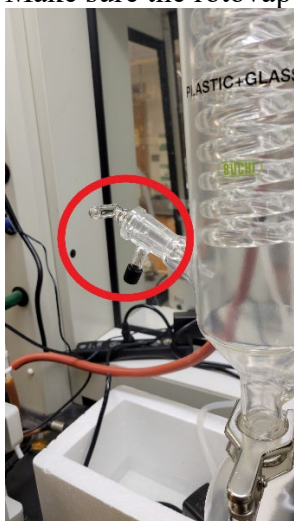
- Make sure there is ice in the cooling bath. If there is no ice, scoop water out until you have enough room for some ice. Add ice if there is no ice.



- Set the temperature for the solvent that you are removing
- Put your flask on the rotovap. **Support the connection with your hand as you put the Keck clip on. To remove the Keck clip, use your hand to support the neck as you remove the clip.** Secure it with the Keck clip.



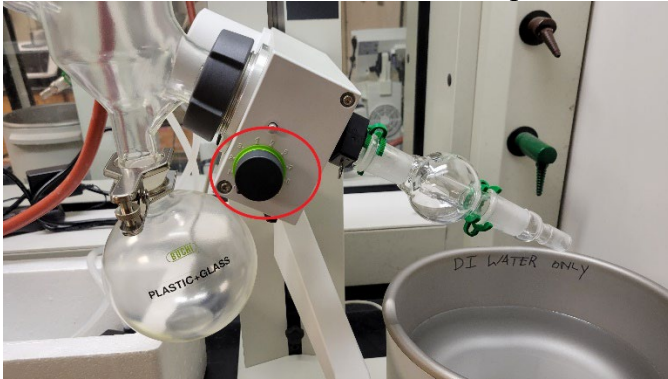
- Make sure the rotovap valve is closed (right angle to the black cap, pointed to you)



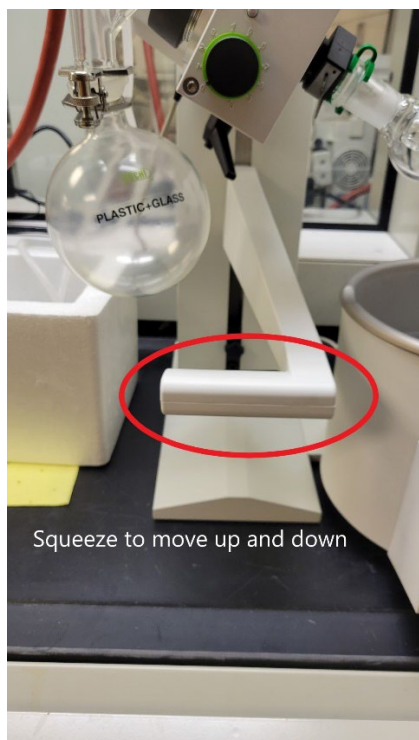
- Set the target pressure of the vacuum pump based on the solvent that you are removing. Press start to turn pump on



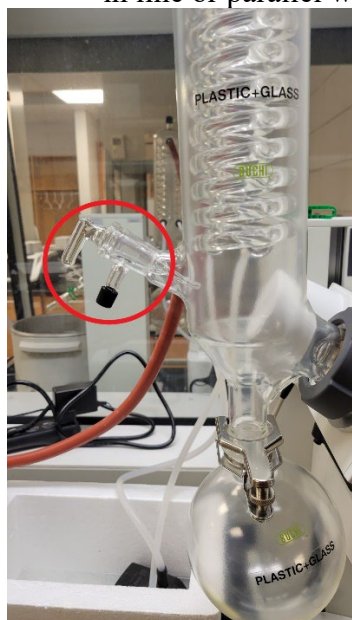
- Turn, the front knob to about 5 or 6 to spin the flask.



- Lower the flask into the water bath using the front handle. Squeeze the handle to release the catch.



- When all of the solvent is removed, bring the flask out of the water bath.
- Turn the knob so that the flask stops spinning.
- Turn pump off. Release/break the vacuum by turning the valve in the front. It should be in line or parallel with the black cap. It might hiss as air enters the rotovap.



- Remove the flask. Remember to give the neck some support when removing the Keck clip.



Make sure to support the neck/flask